



Auditoria Services
design • manufacture • install

Standard Fabric Finishes



Denby Way, Hellaby Industrial Estate, Rotherham, S66 8HR
Reg. No. 1343514 Reg. Office: Slacks Farm, Bramley Rotherham, S66 1TZ

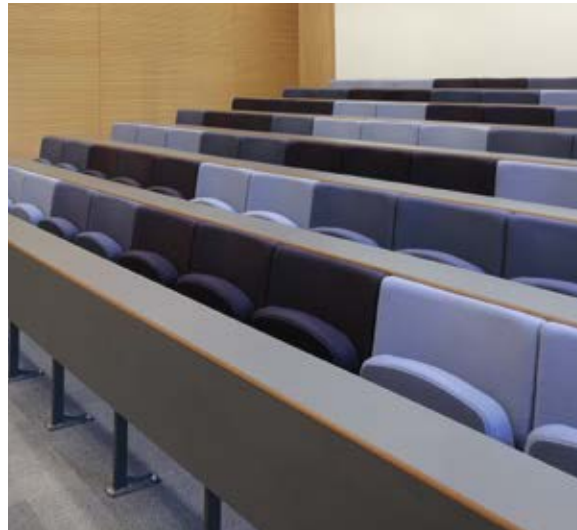
Fabrics

Upholstery Camira Fabric Ranges

We have a vast range of upholstery fabrics consisting of various materials which come in a large variety of colours and textures for your perfect seating solution.

All are fabric options are heavy duty abrasion resistant, easy to clean and flame retardant, making them perfect for high and low traffic seating.

From task and soft seating to eco-friendly we have a fabric option perfect for you.



Bolton Twill Side Curtains

Our Bolton Twill side curtains are made from a 100% cotton twill weave fabric, This cost effective durable material is surface treated to BS5867 - (The British standard for drapery, curtains and blinds) and comes in Black as Standard.

It is a perfect finish for the parameter of your Auditoria retractable seating, Covering the sides and backs of the unit discouraging audience accessibility as well as providing a visual screen between any under unit metal work.

Camira X2



Formula



Percentage



Divide



Multiple



Subtract



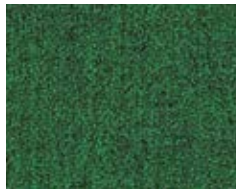
Add



Median



Algebra



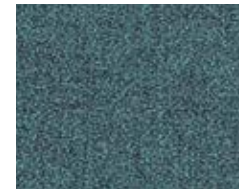
Fraction



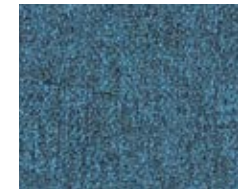
Ratio



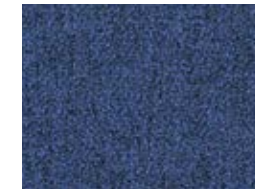
Equation



Polygon



Value



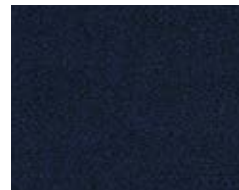
Maths



Calculus



Acute



Metric



Number



Positive



Arithmetic

camira X2

Digital sample may slightly vary from
actually product.

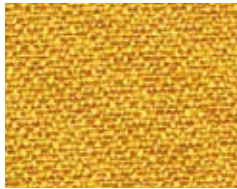
To order samples or to get more information
please use the QR code provided



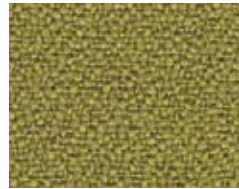
Camira Xtreme



Adobo



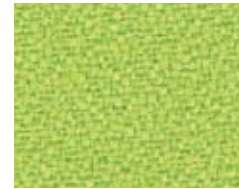
Solana



Appledore



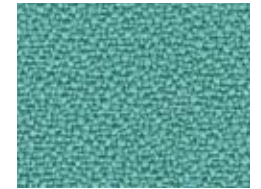
Apple



Madura



Lombok



Campeche



Tortuga



Belize



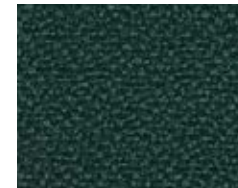
Lobster



Tonga



Windjammer



Taboo



Krabi



Panama



Diablo



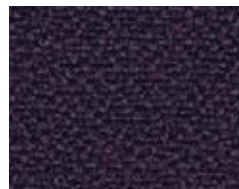
Tokara



Tobago



Bridgetown



Tarot

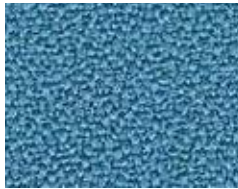
camira Xtreme

Digital sample may slightly vary from
actually product.

To order samples or to get more information
please use the QR code provided



Camira Xtreme



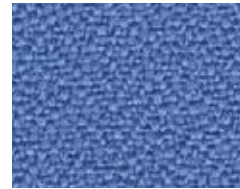
Parasol



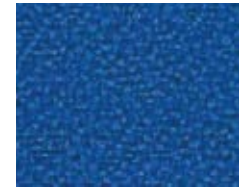
Steel



Martinique



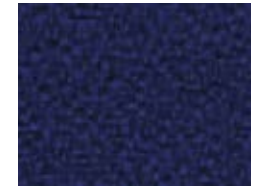
Multiple



Subtract



Add



Median



Scuba



Costa



Cayman



Rum



Slip



Osumi



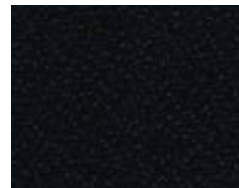
Blizzard



Bonaire



Padang



Havana



Sombero



Aruba



Sandstorm



Nougat

camira Xtreme

Digital sample may slightly vary from
actually product.

To order samples or to get more information
please use the QR code provided



Camira Main Line Plus



Marmalade



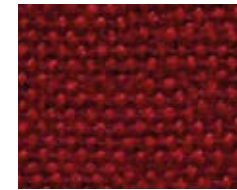
Red



Crimson



Claret



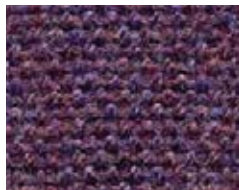
Matador



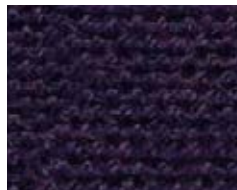
Ruby



Wine



Penstemon



Prudence



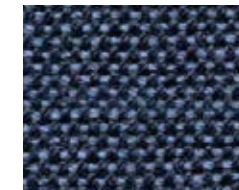
Clipper



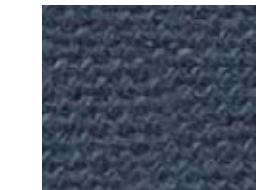
Royal



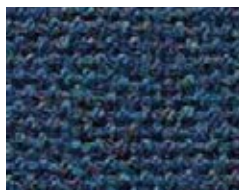
Wedgwood



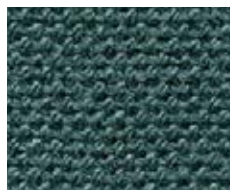
Tuscany



Bluenote



Cressida



Aquamarine



Mermaid



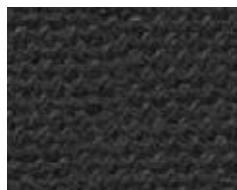
Juniper



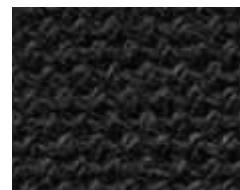
Girder



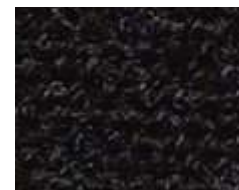
Lead



Carbon



Black



Charcoal

camira Mainline Plus

Digital sample may slightly vary from
actually product.

To order samples or to get more information
please use the QR code provided



Fabric Information

X2 - Product information



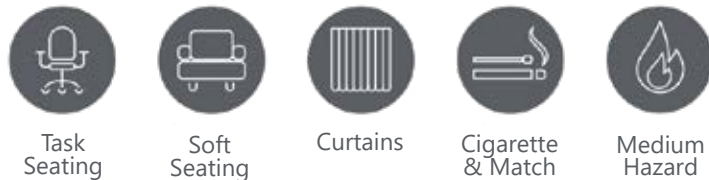
X2 provides stretch, flammability and abrasion performance in an unobtrusive background grey mélange effect. The subtle dark tones create texture and dimension within a playful colour palette of brights through to subtle neutrals. The mottled appearance is also a practical solution to aid appearance retention. X2 is a 100% recycled fabric including closed loop content derived from textile remnants, which are first re-made into polyester yarn and then upcycled into new fabric.

Xtreme - Product information



Xtreme is a modern crepe weave fabric made from 100% post-consumer recycled polyester, diverting waste from landfill and saving virgin raw materials. Its stretch properties, coupled with high flame retardancy, durability and non-pilling properties make Xtreme an ever popular fabric for task seating.

Main Line Plus - Product information



One of the most popular seating fabrics in the Camira collection. Available in an extensive colour palette, this versatile plain weave fabric gives a smart appearance to most seating styles.

Fabric Specifications

Materials	Camira Main Line Plus	Camira X2	Camira Xtreme
Composition	67% Wool, 20% Flame Retardant Viscose, 13% Viscose	100% post-consumer recycled polyester	100% post-consumer recycled polyester
Abrasion Resistance	Heavy duty / 10 year guarantee. Independently certified to ≥50,000 Martindale cycles	Heavy duty / 10 year guarantee. Independently certified to ≥100,000 Martindale cycles	Heavy duty / 10 year guarantee. Independently certified to ≥100,000 Martindale cycles
Flammability	EN 1021 - 1&2 (cigarette & match) BS 7176 Low & Medium Hazard BS 5852 Ignition Source 5 BS 5867-2 Type B Curtains & Drapes The Furniture and Furnishing (Fire) (Safety) Regulations 1988 (Domestic Cigarette and Match)	EN 1021 - 1&2 (cigarette & match) BS 7176 Low & Medium Hazard BS 5852 Ignition Source 5 DIN 4102 B1, NF D 60-013 ÖNORM B 3825 & A 3800-1 (over 58 kg/m ³ CMHR foam), UNI 9175 Classe 1 IM BS 476 Part 7 Class 1 (Adhered)	EN 1021 - 1&2 (cigarette & match) BS 7176 Low & Medium Hazard BS 5852 Ignition Source 5 BS 7176 Medium Hazard DIN 4102 B1, NF D 60-013 ÖNORM B 3825 & A 3800-1 (58 kg/m ³ CMHR Foam) UNI 9175 Classe 1 IM
Light Fastness	5 (ISO 105 - B02)	6 (ISO 105 - B02)	6 (ISO 105 - B02)
Fastness to Rubbing	Wet: 3/4, Dry: 4 (ISO 105 - X12)	Wet: 4, Dry: 4 (ISO 105 - X12)	Wet: 4, Dry: 4 (ISO 105 - X12)
Cleaning	Vacuum regularly. Wipe with a damp cloth using soap and water or use proprietary upholstery shampoo. For deeper cleaning use steam or professionally dry clean.	Vacuum regularly. Wipe with a damp cloth using soap and water or use proprietary upholstery shampoo/soap. For deeper cleaning use steam, bleach, alcohol or professionally dry clean.	Vacuum regularly. Wipe with a damp cloth using soap and water or use proprietary upholstery shampoo. For deeper cleaning use steam, bleach, alcohol or professionally dry clean. Can be washed at 60°C.
Bleach Cleaning	N.A	ISO 105 E03 colour change 4 for dilution factor 1:4 chlorine solution.	ISO 105 E03 colour change 4 for dilution factor 1:4 chlorine solution.
Environmental	N.A	Certified to the EU Ecolabel Certified to OEKO-TEX® Standard 100 Certified to Indoor Advantage™ "Gold" Made from 100% recycled polyester Non metallic dyestuffs	Certified to the EU Ecolabel Certified to OEKO-TEX® Standard 100 Certified to Indoor Advantage™ "Gold" Made from 100% recycled polyester Non metallic dyestuffs

Side Curtains Specifications



Bolton Twill



Dry Clean
Only



Fire Rating
NDFR



Fire Certification
BS5867

Bolton Twill

Digital sample may slightly vary from actually product.

To order samples or to get more information please use the QR code provided



Tech Specification	Details
Flame Retardancy	NDFR
Fire Certification	BS5867
Material	100% Cotton - Twill Weave
Surface Treatment	Dyed - Flameproofed
Information	<p>Non-Durably Flame Retardant. This means that the fabric is chemically treated and if wet (in any way) should be retreated to meet the flammability requirements of BS5867 Part 2 Type B. Therefore, the cloth will not withstand wet cleaning and should be re-flame proofed whenever wet. The cloth can be professionally dry cleaned using the correct chemical process.</p> <p>Notwithstanding the aforementioned, it would be our advice to only dry clean this material periodically. We would suggest that the curtain be soft-brushed on a regular basis and periodically cleaned using a vacuum and drapery attachment. Commercial flame retardants may alter the aesthetics, appearance, colour or performance of the textile material.</p>



Auditoria Services
design • manufacture • install



01709 543 345



sales@auditoria-services.com



www.auditoria-service.com



Denby Way, Hellaby Industrial Estate, Rotherham, S66 8HR
Reg. No. 1343514 Reg. Office: Slacks Farm, Bramley Rotherham, S66 1TZ